

# CHESTERFIELD HOUSE

MAYFAIR W1



# CHESTERFIELD HOUSE, CHESTERFIELD GARDENS

## MAYFAIR W1

A well presented first floor apartment of approximately 1077 sq.ft with a double reception room and two double bedrooms in this highly regarded portered block, quietly located off Curzon Street in this quiet cul de sac.

There is restricted off street parking available.

**LEASEHOLD:** 98 years plus share of freehold.

**GROUND RENT:** £25 per annum

**SERVICE CHARGE:** Approximately £6,206 per annum with an annual contribution to the sinking fund of £771.48

**PRICE:** £1,350,000 Subject to contract



INDEPENDENT PROPERTY CONSULTANTS

23 BERKELEY SQUARE

MAYFAIR, LONDON W1J 6HE

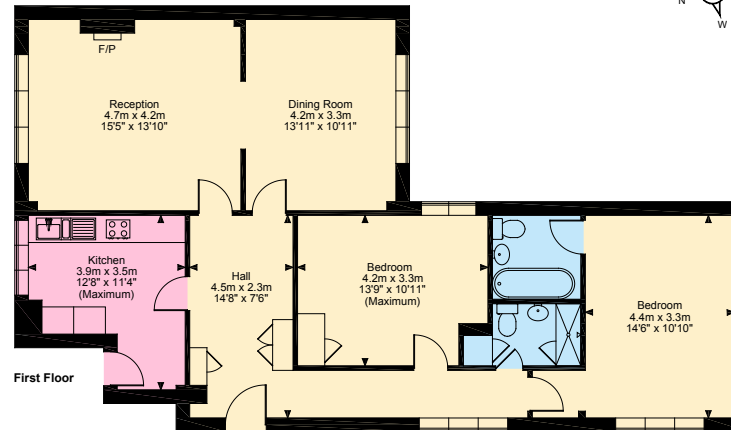
020 7665 6633

www.mercerpassqua.co.uk

We wish to advise prospective purchasers that these sale particulars are believed to be correct, but their accuracy is in no way guaranteed, nor do they form part of any contract. We have not carried out a detailed survey nor tested the services, appliances or specific fittings. Measurements are approximate. July 2010.



Chesterfield Gardens, W1J  
Approximate Gross Internal Area  
1077 Sq Ft/100 Sq M



FOR ILLUSTRATIVE PURPOSES ONLY - NOT TO SCALE  
 The position & size of doors, windows, appliances and other features are approximate only.  
 © ehous. Unauthorised reproduction prohibited. Drawing ref. dig/8120516/TML

